

Creating Postscript Files:
QuarkXPress 4.04 & 4.11 - PC

Setup Options For Composite PostScript Files:

**** This instruction package was created on Windows XP. Items may appear differently depending on what operating system you are running on your machine.*

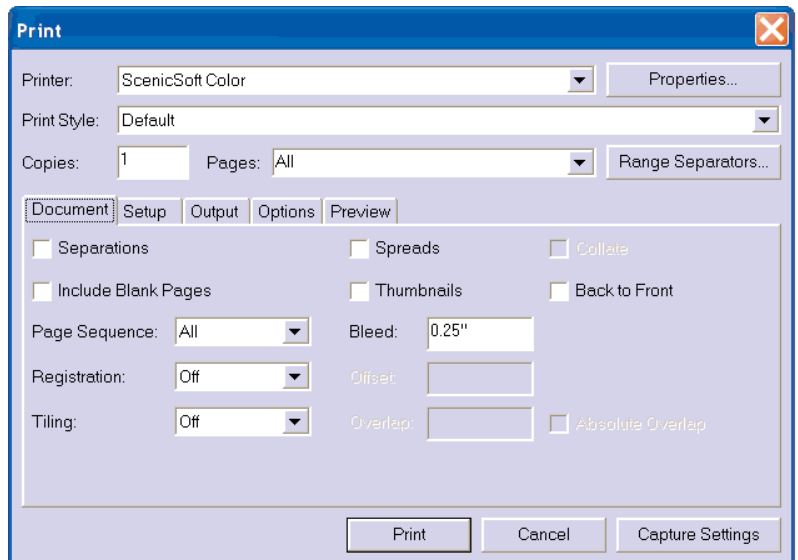
- From the **File** menu, select **Print**.
- Select the page range that you wish to print.
- Select the **Document** tab and match the example to the right:

Note: The Printer will depend on whatever PostScript Printer Driver you have set up on your machine for saving PostScript files.

If you are saving a spread, check the "Spreads" box.

If anything is bleeding off the page in the layout, you must have the bleed on in order for it to show up in the PostScript file. If it is not saved properly here there is no way to get the bleed back when the job is given to us.

The amount of bleed that needs to be assigned depends on the particular document. You may need more than .25".

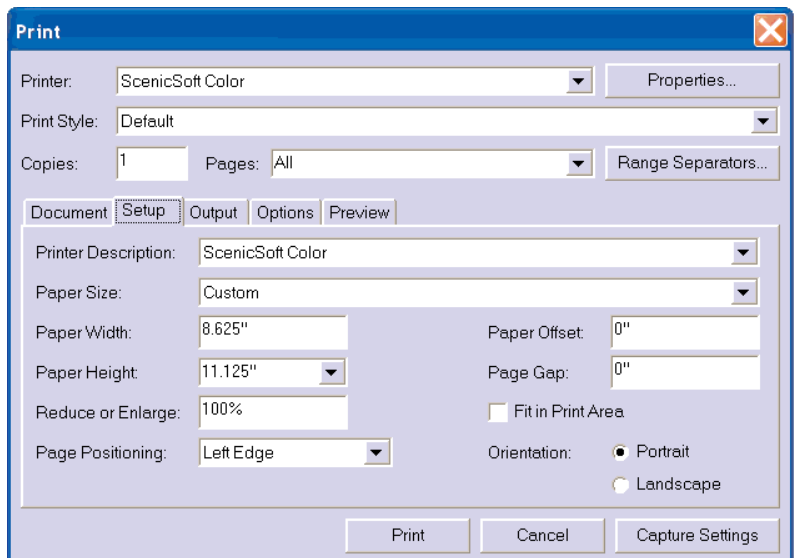


- Select the **Setup** tab and match the example to the right:

Note: Beside Printer Description... this depends on whatever printer driver you are using to print PostScript files.

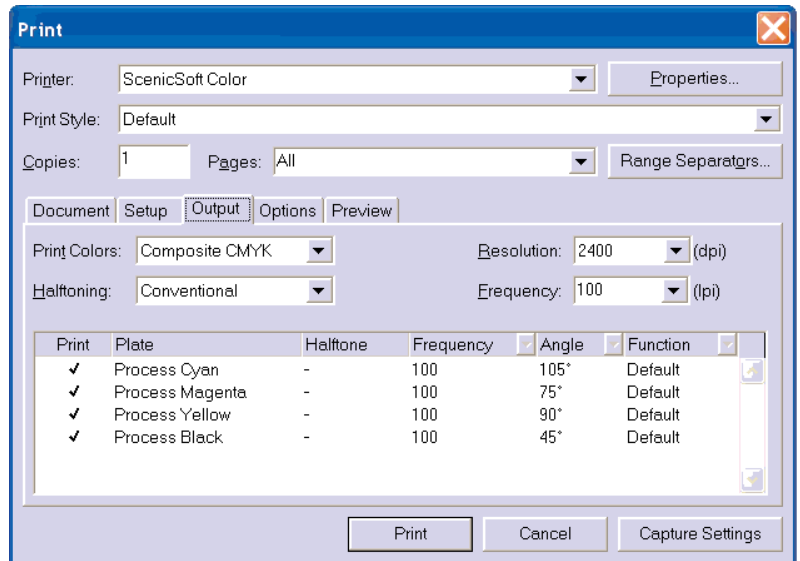
The Paper Width & Paper Height should be set for the final output size allowing for trim & any bleed passed the trim. Do not just use the numbers that are shown in this example.

If you are saving a spread, keep in mind that the Paper Width must allow for two pages.

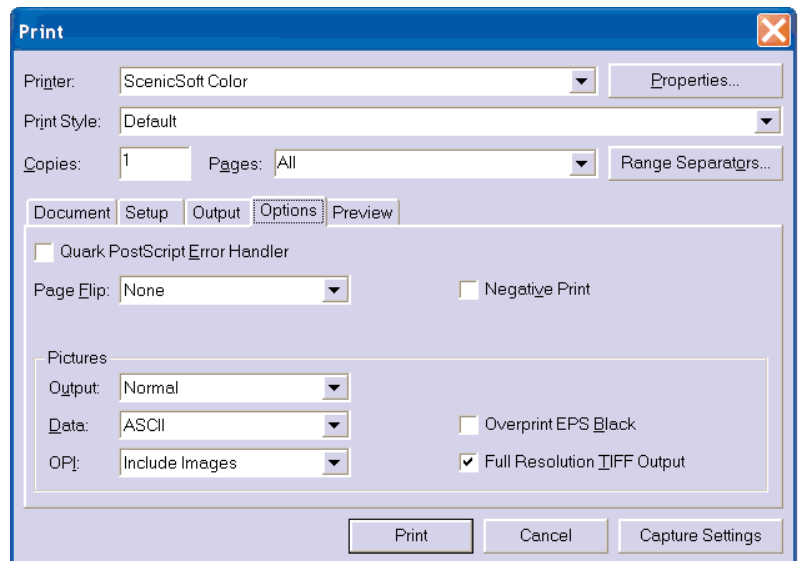


- Select the **Output** tab and match the example to the right:

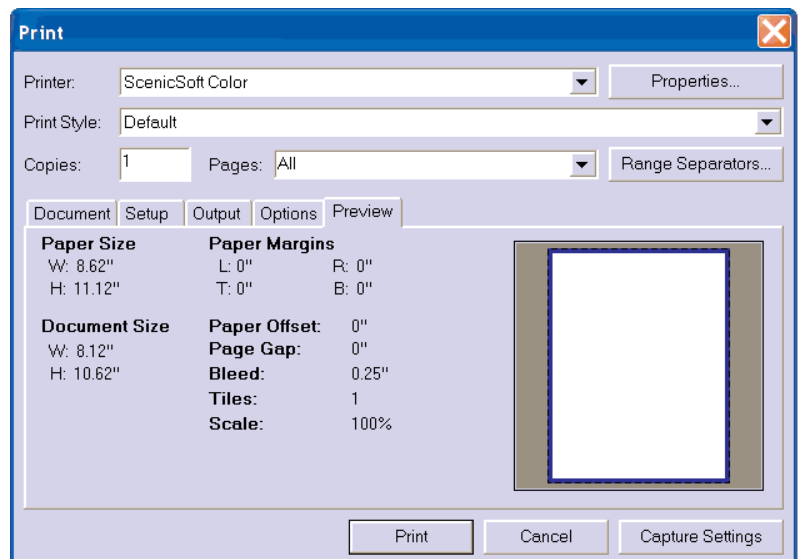
Note: The resolution on your printer may not go up to 2400 dpi. This is OK because the resolution will be overridden later on in the process.



- Select the **Options** tab and match the example to the right:



- Select the **Preview** tab:



- Click **Print**.
- Name the .ps file and navigate your way to where you'd like to save the file.

A color composite PostScript file has been created from Quark 4.0 and is ready to distill.

***You can save those settings as a **Print Style** so that you won't have to go in and set the tabs every time. This can be found under **Edit > Print Styles...**